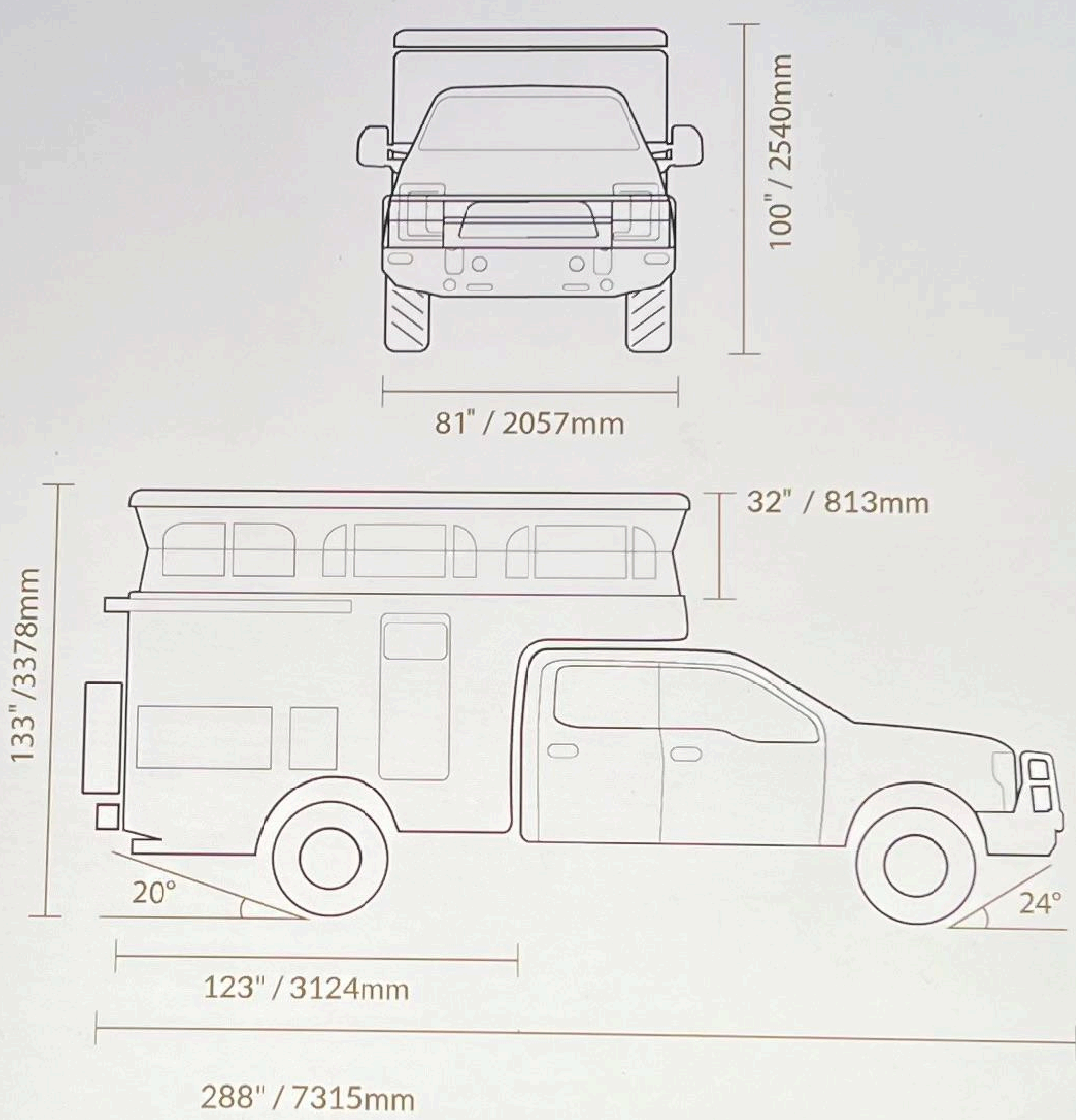


# TERRANOVA Ford F350 4x4 Crew Cab

DESCRIPTION		PRICE
<b>Base Price</b>		<b>\$ 350,000.00</b>
16,500 lb winch	x	\$ 3,745.00
Grill Guard addition	x	\$ 625.00
Additional house battery, 400 Alt	x	\$ 9,000.00
Additional 108 Watt solar panels (up to 3)	x	\$ 650.00
Bumper light package (6.7" round and curved light bar)	x	\$ 2,600.00
Bug screen	x	\$ 1,260.00
Thermal barrier	x	\$ 585.00
Locker box outside shower H/C	x	\$ 975.00
Locker box purified drinking water faucet (must select "outside shower" option)	x	\$ 325.00
Locker box airline track package 15" of track and tie downs	x	\$ 995.00
Fresh water expansion tank- 20 Gal	x	\$ 975.00
Winterization device	x	\$ 120.00
Rear bumper Max Track/Ax/Shovel holder EC Max Track	x	\$ 1,565.00
270 Degree awning	x	\$ 4,550.00
Running boards (after delivery)	x	\$ 750.00
Cameras (after delivery)	x	\$ 2,600.00
Garmin Overlander (after delivery)	x	\$ 1,200.00
50" overhead lightbar	x	\$ 2,550.00
DC Air Conditioner (requires additional house battery and 3 additional solar panels)	x	\$ 13,850.00
Table cut outs (after delivery)	x	\$ 300.00
<b>TOTAL</b>		<b>\$ 399,220.00</b>
Six Solar Panels		
Dual DC 100 AMP		
Body Wrap		

earthcruiser.com

# TERRANOVA



## Camping Features

+

## Specifications

+

### PLATFORM

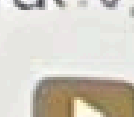
Chassis Style	Domestic 1 Ton Cab Chassis
Cab Style	Body on Frame
House Construction	Molded and insulated walls, floor, roof, and doors – approx. 1" thick
Curtain construction	Triple-layer laminated, rated -22 to 158 deg F
Base Chassis	2020+ Ford F-350, 2020+ RAM 3500 (MUST 60" CA)
House Length	184.5" / 4686mm
House Height	78"/1981 mm
Overall Height	2022 Ford F350 Crew Cab ~ 100" / 2540mm / Ram 3500 TBD
Overall Width	81" / 2057mm
Wet Weight	11,000 lbs Dry – 11,400 lbs wet (average – chassis dependent)

### CAB / CHASSIS

House-to-Chassis	EarthCruiser Poly Mounting System
Exterior Features	Alloy Bull Bar w/ recovery points, transfer case skid plates, 16,500 lb. front winch, spare wheel carrier, spare wheel cover w/ rubbish bag, towbar w/ tail lamps, Class IV hitch receiver, 35" oversize tires, HD wheels
Cab Chassis Features	Manufacturer specific
Suspension	Upgraded rear springs, Performance reservoir shocks

### EXTERIOR

House Components	Electric roof actuators w/ manual override, locks/latches flush or recessed, integrated body side skirts, automatic open/close stairs w/ lockout
Lighting	LED side and rear scene lighting, high mount reverse and stop/turn/taillights
Storage	Side skirt toolboxes
Access	Electrically operated entry stairs, forward cab pass through, curtain openings including insect, privacy, and clear vinyl screens



CONTACT US